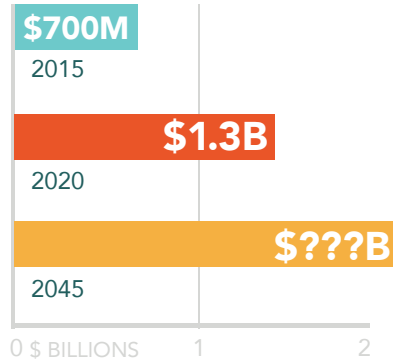


# WHY A SANTA CRUZ COUNTY PASSENGER TRAIN IS A BAD IDEA

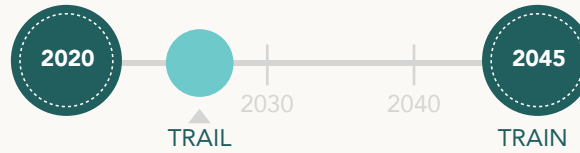
## UNAFFORDABLE



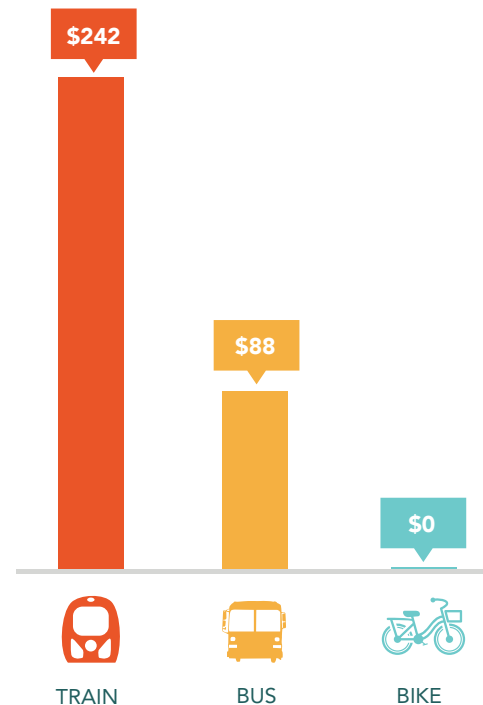
Funding the train will require a **1/2% SALES TAX INCREASE.**

## NO REAL PLAN

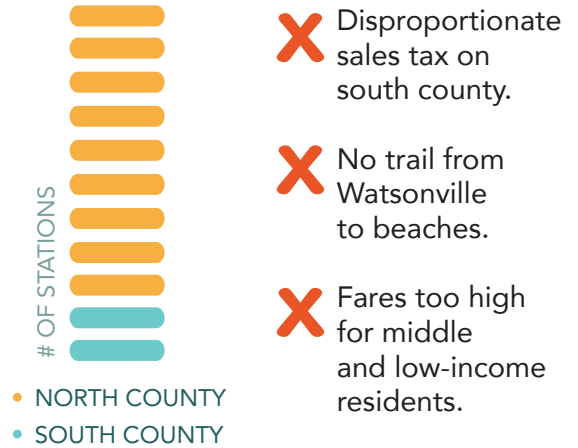
It would take **25 YEARS** to complete the train and trail project. A commute and recreation trail could be completed in 5 years.



## HIGH MONTHLY COMMUTE COSTS



## SOCIAL INEQUITY



## NO HWY 1 TRAFFIC RELIEF



Insignificant Highway 1 traffic reduction (1.7%). On neighborhood streets, traffic would increase due to train crossings.

## CHILDREN AT RISK



Trains traveling 45-60 mph within feet of children is not safe.

## BAD FOR THE ENVIRONMENT

- ▶ HUNDREDS of trees destroyed
- ▶ THOUSANDS of tons of earth moved
- ▶ MANY natural habitats destroyed
- ▶ MILES of retaining walls built